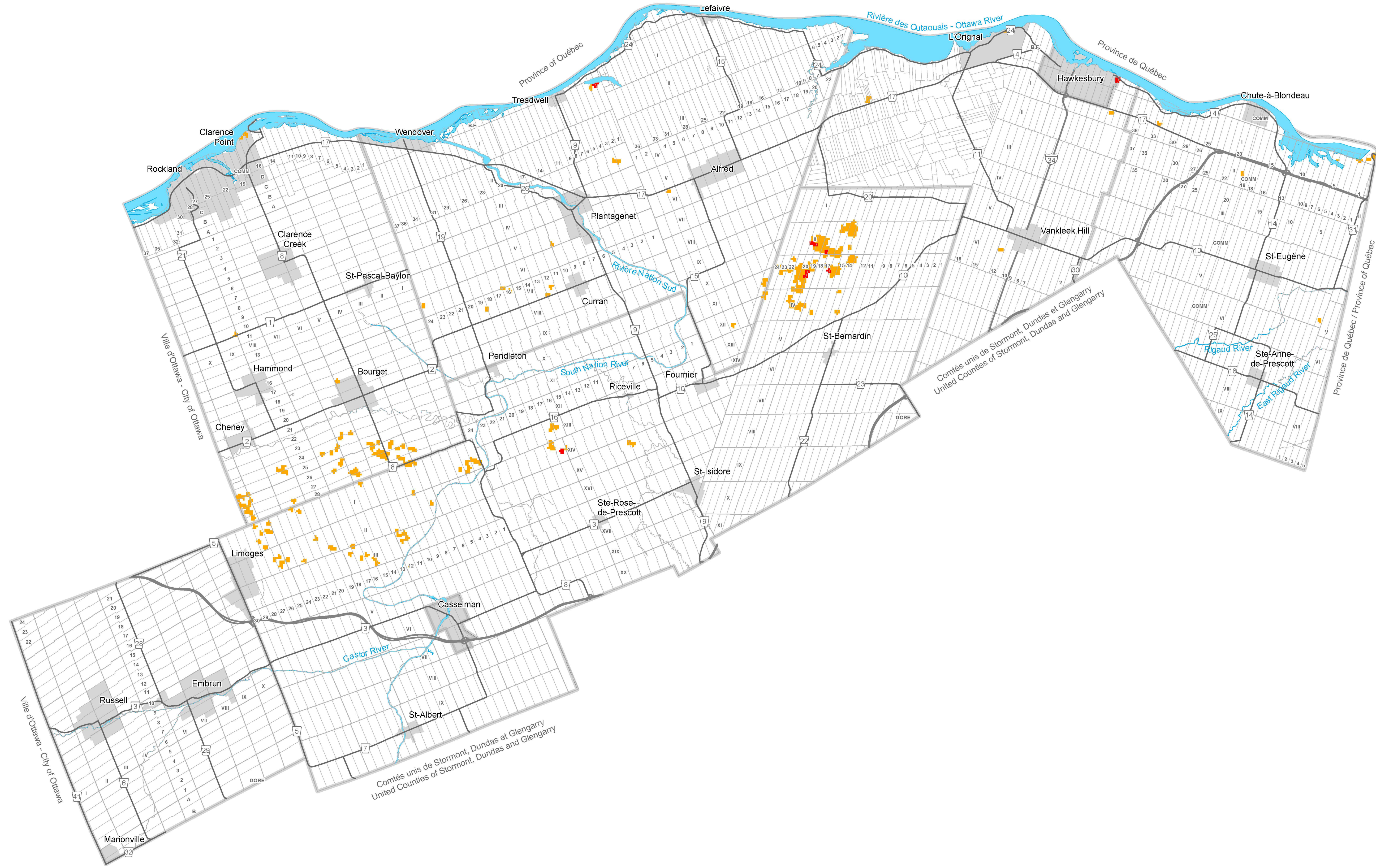


# Appendix 3

## Hazardous Forest Types for Wildland Fire

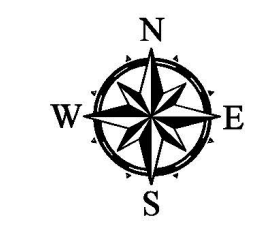


**Legend**

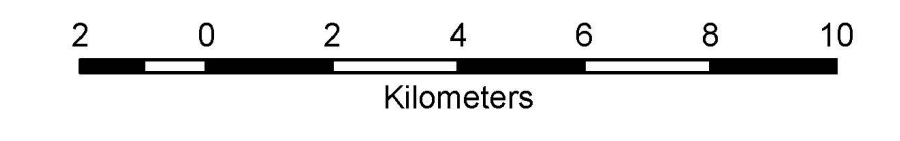
**Potential Hazardous Fuel Types**

- Extreme - C1, C2, C4
- High - C3, M2>50%, M4

# Draft



Scale: 1:120,000



**Notes**

This schedule forms part of the Official Plan of the United Counties of Prescott and Russell and must be read in conjunction with the text. For more information about cartographic sources, please consult the appropriate section of the Official Plan.

In order to determine land uses, reference must also be made to Schedule A2, Land Use Designation.

Prepared by the Planning and Forestry Department, United Counties of Prescott and Russell.

## Appendix 3 - Draft

### Title

Hazardous Forest Types for Wildland Fire

### Legend

Potential Hazardous Fuel Types

Extreme – C1, C2, C4 and High – C3, M2>50%, M4

### Description

Appendix 3 of the Official Plan of the United Counties of Prescott and Russell identifies areas that may be unsafe due to the presence of hazardous forest types for wildland fire within the jurisdiction of the United Counties of Prescott and Russell.

### Note

This schedule forms part of the Official Plan of the United Counties of Prescott and Russell and must be read in conjunction with the text. For more information about cartographic sources, please consult the appropriate section of the Official Plan.