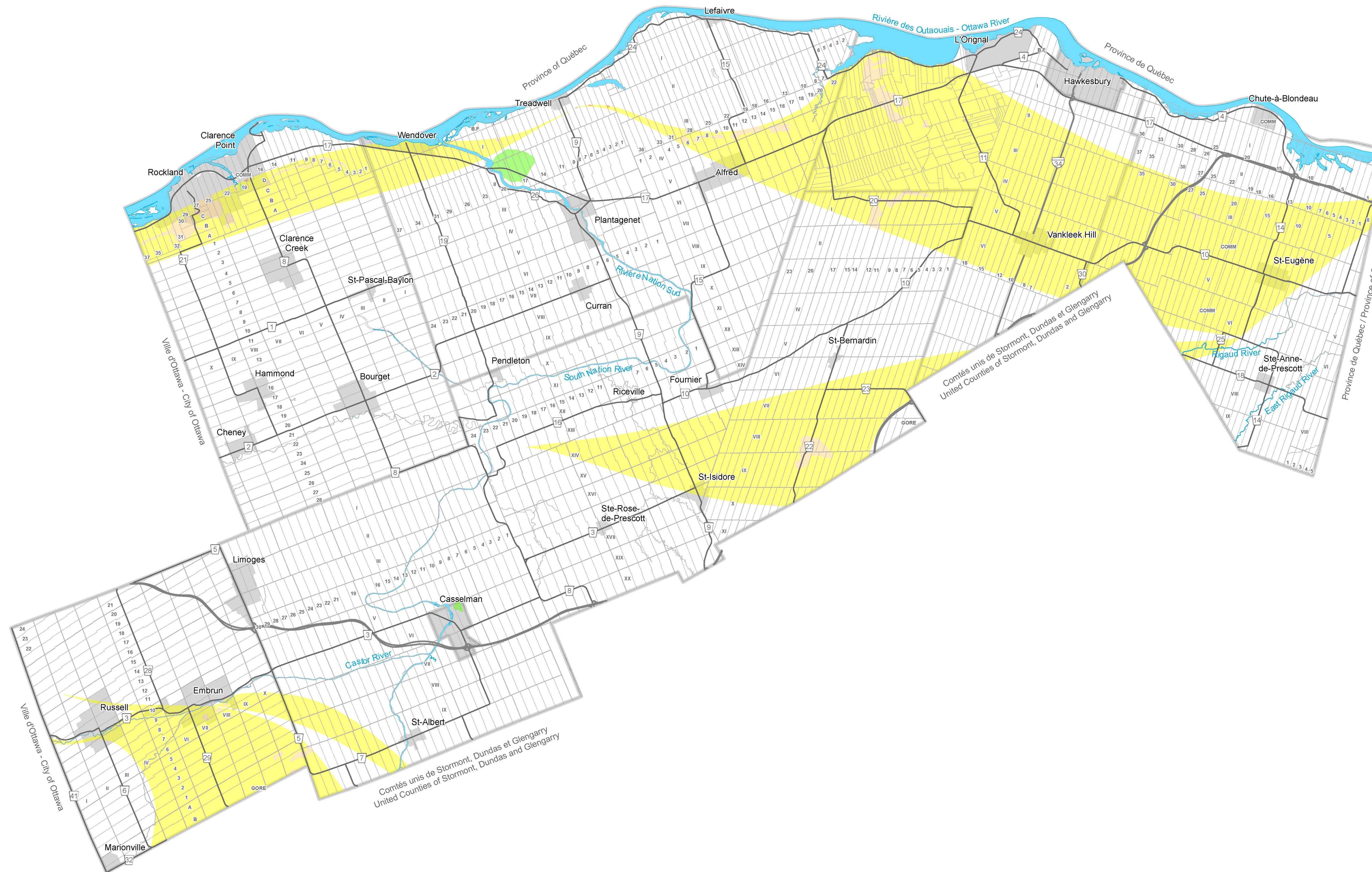


Schedule C2

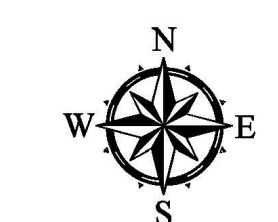
Unstable Bedrock Area

Legend

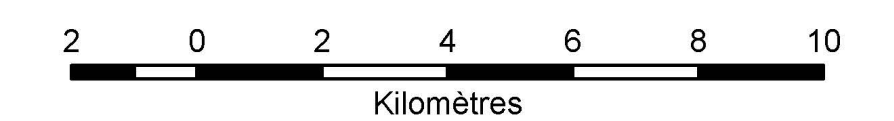
- Unstable Bedrock Area (Known Karst)
- Unstable Bedrock Area (Inferred Karst)
- Unstable Bedrock Area (Potential Karst)
- Unstable Bedrock Area (Locally Known Karst)



Draft



Scale: 1:120,000



Notes

This schedule forms part of the Official Plan of the United Counties of Prescott and Russell and must be read in conjunction with the text. For more information about cartographic sources, please consult the appropriate section of the Official Plan.

In order to determine land uses, reference must also be made to Schedule A2, Land Use Designation.

Prepared by the Planning and Forestry Department, United Counties of Prescott and Russell.

Schedule C2 - Draft

Title

Unstable Bedrock Area

Legend

Unstable Bedrock Area (Known Karst)

Unstable Bedrock Area (Inferred Karst)

Unstable Bedrock Area (Potential Karst)

Unstable Bedrock Area (Locally Known Karst)

Description

Schedule C2 of the Official Plan of the United Counties of Prescott and Russell illustrates areas of unstable bedrock including areas known as karst topography within the jurisdiction of the United Counties of Prescott and Russell.

Note

This schedule forms part of the Official Plan of the United Counties of Prescott and Russell and must be read in conjunction with the text. For more information about cartographic sources, please consult the appropriate section of the Official Plan.