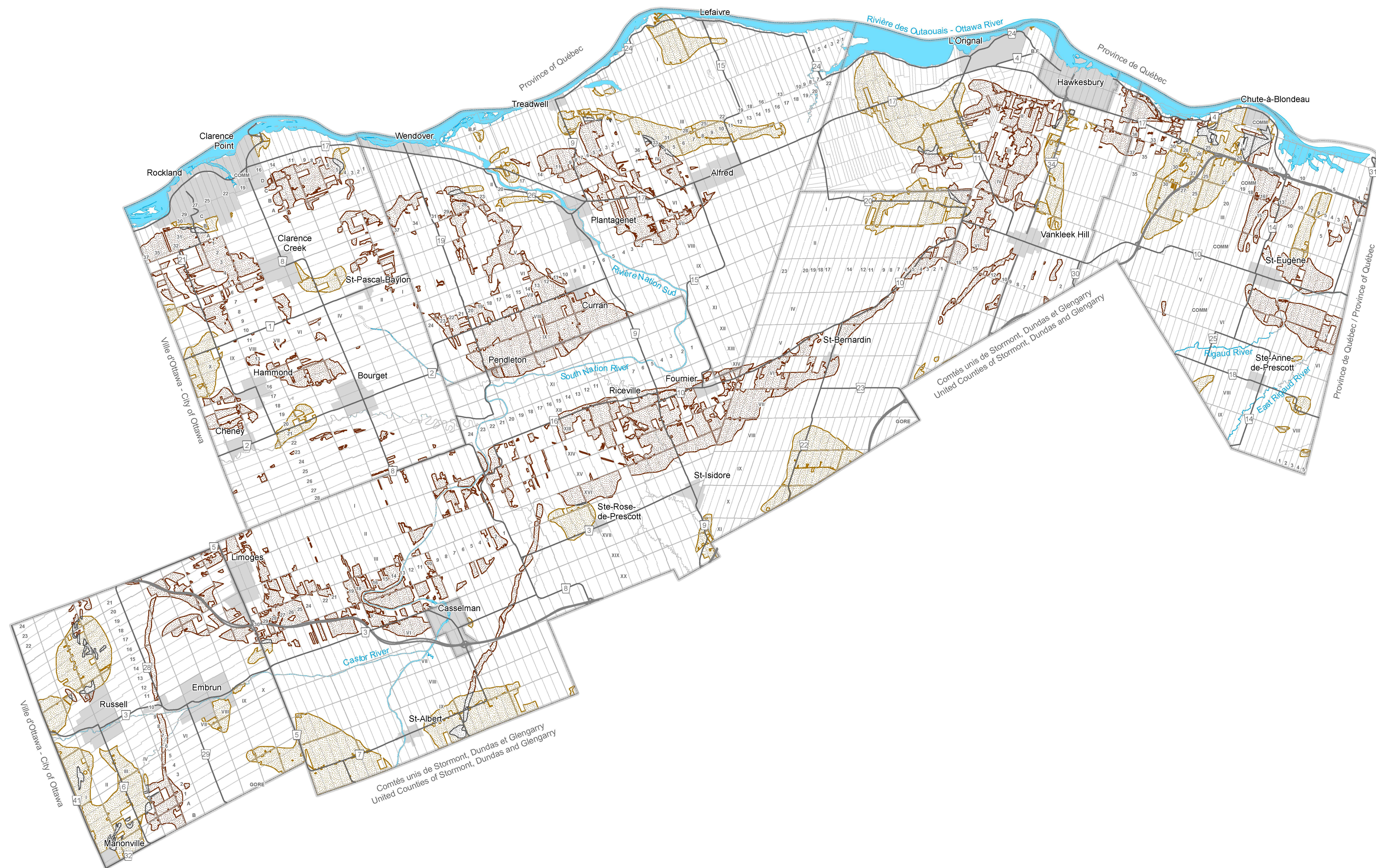





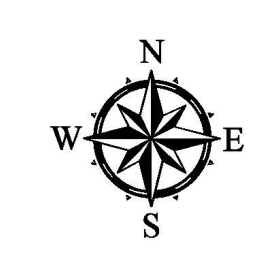
Schedule E

Mineral Aggregate Resource

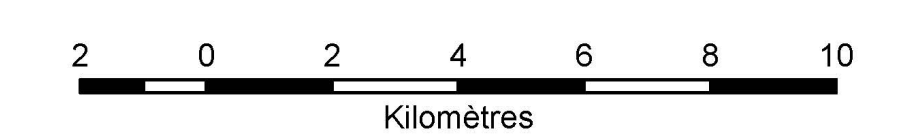


- Resource**
- Mineral Aggregate Resource Policy Area**
-  Bedrock Resource
 -  Bedrock and Sand-Gravel Resource
 -  Sand-Gravel Resource

Draft



Scale: 1:120,000



Notes

This schedule forms part of the Official Plan of the United Counties of Prescott and Russell and must be read in conjunction with the text. For more information about cartographic sources, please consult the appropriate section of the Official Plan.

Prepared by the Planning and Forestry Department, United Counties of Prescott and Russell.

Schedule E - Draft

Title

Mineral Aggregate Resource

Legend

Mineral Aggregate Resource Policy Area

Bedrock Resource, Bedrock and Sand-Gravel Resource

Description

Schedule E of the Official Plan of the United Counties of Prescott and Russell identifies mineral aggregate resources within the jurisdiction of the United Counties of Prescott and Russell to ensure an adequate supply for future generations.

Note

This schedule forms part of the Official Plan of the United Counties of Prescott and Russell and must be read in conjunction with the text. For more information about cartographic sources, please consult the appropriate section of the Official Plan.